

# MONTHLY MEMBERSHIP PROGRESS REPORT

LOCATION WASHINGTON

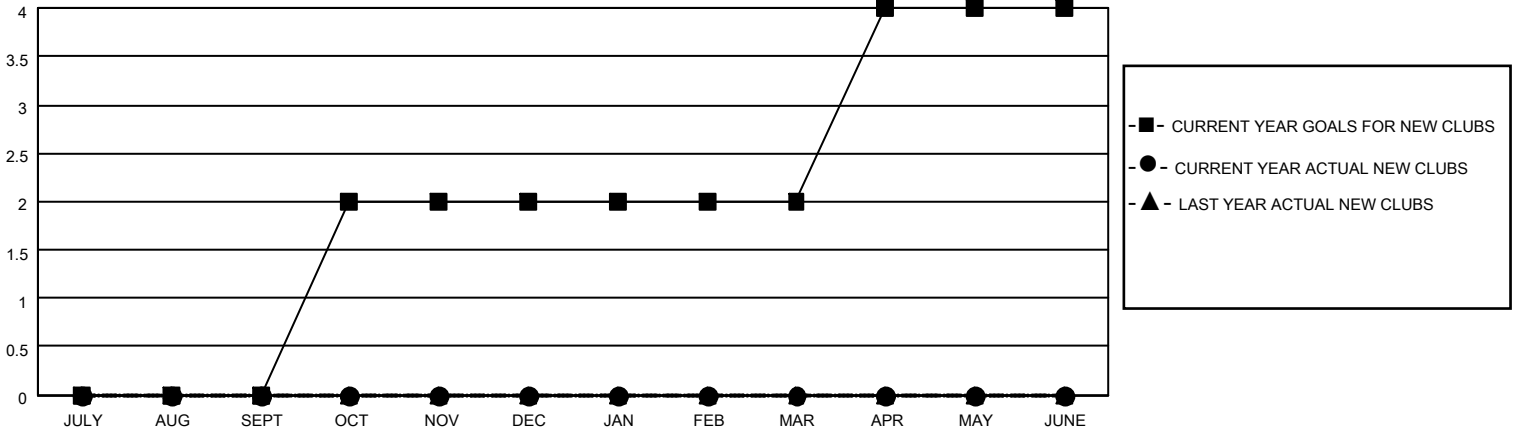
District 19 B

Results as of: 6/30/2022

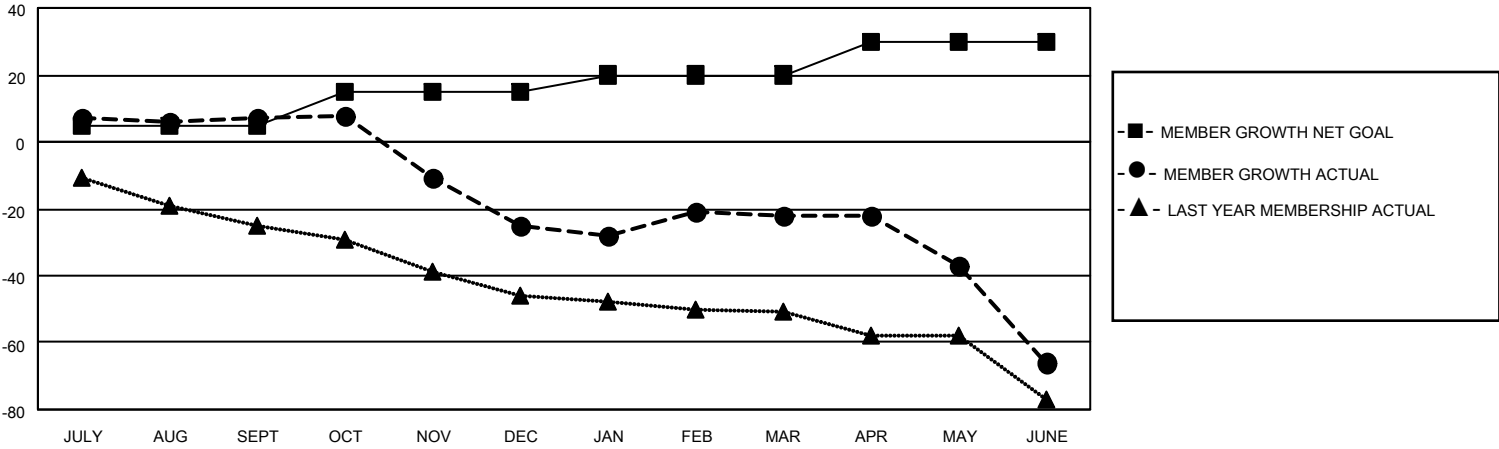
Clubs			
RESULTS FOR 2021-2022			
QUARTER	NEW CLUB GOAL	NEW CLUBS	DROPPED CLUBS
JULY/AUG/SEPT	0	0	0
OCT/NOV/DEC	2	0	2
JAN/FEB/MAR	0	0	0
APR/MAY/JUNE	2	0	2

Members			
RESULTS FOR 2021-2022			
QUARTER	MEMBER GROWTH NET GOAL	MEMBER GROWTH ACTUAL	DROPPED MEMBERS ACTUAL (including transfers)
JULY/AUG/SEPT	5	26	14
OCT/NOV/DEC	10	11	42
JAN/FEB/MAR	5	18	11
APR/MAY/JUNE	10	13	56

**GOALS AND ACTUAL NEW CLUBS CUMULATIVE**



**GOALS AND ACTUAL MEMBERS CUMULATIVE**



**DROPPED CLUBS: 4**

12 CLUBS OF 30 ADDED 1 OR MORE NEW MEMBERS

GENDER DISTRIBUTION

MALE	314 (55.97%)
FEMALE	247 (44.03%)
NON BINARY	0 (0.00%)
PREFER NOT TO ANSWER	0 (0.00%)

DROPPED MEMBERS

DECEASED	14
CLUB CANCELLED	29
OTHER	80
<b>TOTAL</b>	<b>123</b>

[CLICK HERE FOR CUMULATIVE MEMBERSHIP DATA](#)

TOTAL FAMILY UNIT MEMBERS	130
FAMILY MEMBERS PAYING HALF DUES	67